

## **IN THE EVENT OF A FIRE**

**\*\*REMAIN CALM !\*\***

- 1. Ensure Fire Alarm is activated.**
  
- 2. NOTIFY THE FIRE DEPARTMENT – DIAL: 911**
  
- 3. Assist evacuating the building. Leave by the nearest exit.  
Close the door behind you.**
  
- 4. All persons to meet in the main parking lot in front of the building.**
  
- 5. Manager or Duty Supervisor to meet the fire official to provide information.**
  
- 6. Upon arrival of the Fire Department; turn the situation over to them.**

Distribution of the Fire Safety Plan

Chatham-Kent Fire Department	entire plan
Clubhouse Manager	entire plan
Office Manager	entire plan
Site Office	entire plan
Maintenance Supervisor	entire plan

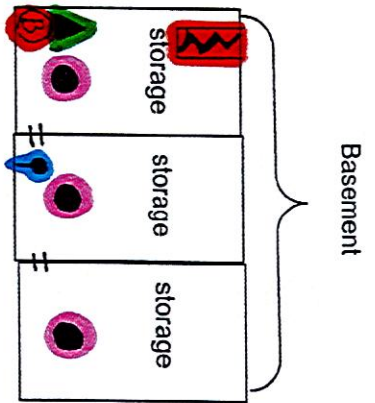
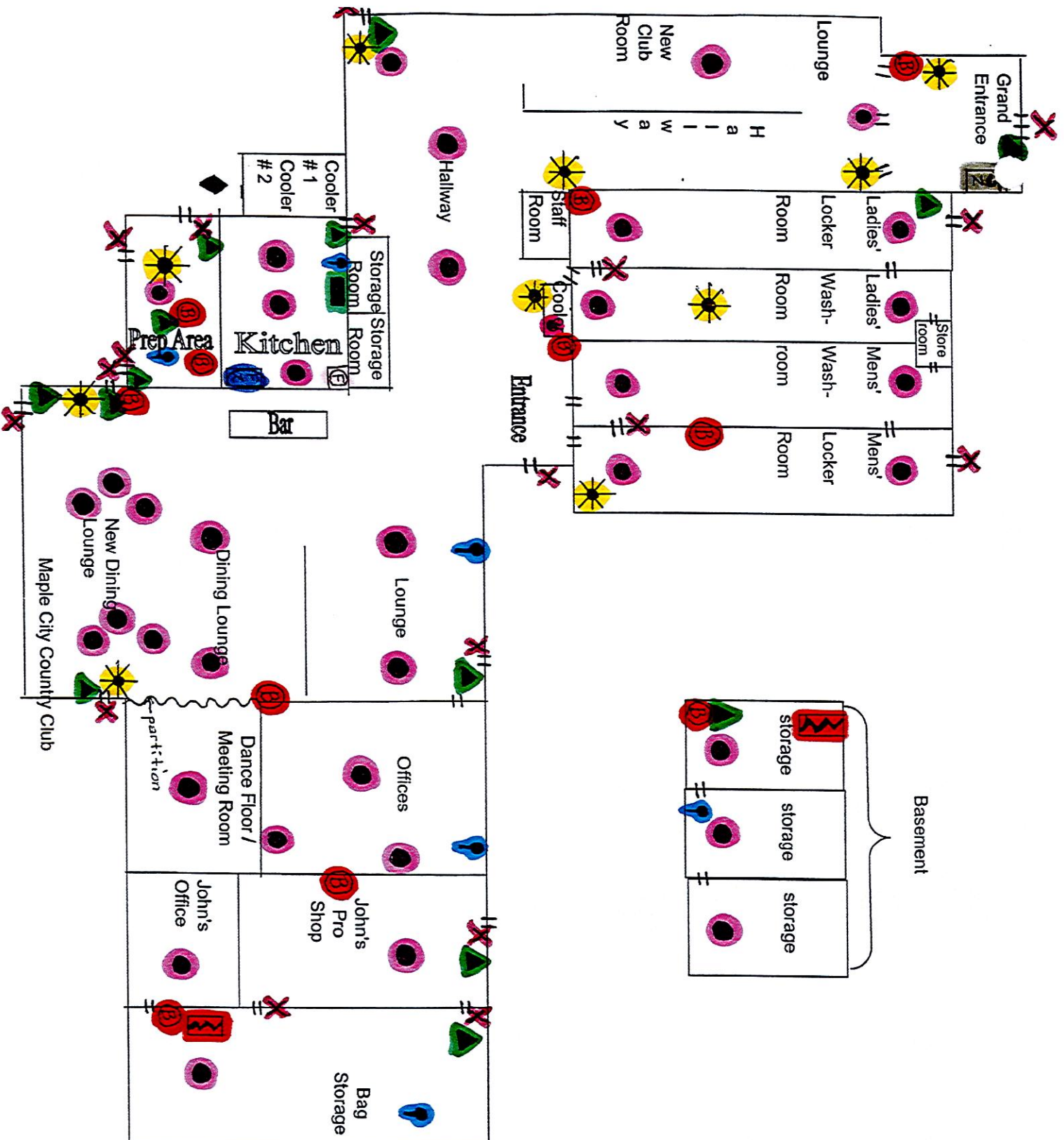
Schematic Diagrams

Main Floor

Basement

Legend

- Exits . X . . . . .
- Emergency Lighting . \* . . . .
- Gas Shut Off Valve . ◆ . . . .
- Electrical Room . B . . . . .
- Fire Extinguishers . • . . . .
- Special Extinguishing System . [REDACTED] . . . . .
- Fire Separations . N/A . . . . .
- Fire Alarm System
  - Manual Pull Station . ▲ . . . .
  - Automatic Detectors . ● . . . .
  - Sounding Devices . (B) . . . . .



Basement

**Legend**

- Bells (B)
- Heat Detectors
- Manual Pull Stations
- Smoke Detectors N/A
- Exit Signs
- Doorways =
- 5-Zone Panel
- Stairways
- Emergency Light
- Gas Shut Off Valve
- Fire Extinguishers
- Special Exting. System
- Electrical Room
- Fridge
- Freezer